

# SPECIFICATION

Customer: \_\_\_\_\_  
Product Description: 7" TFT LCD MODULE  
Customer Model Name.: \_\_\_\_\_  
Customer P/N No.: \_\_\_\_\_  
Model Name.: AN-A7.0CHL  
Date: 2008-10-30

Approved By Customer

**ANCO ELECTRONICS CO., LTD**

GUANGZHOU DADAO NAN 325 HAO BIHAI DASHA 1107 SHI  
GUANGZHOU CHINA.

TEL: 86-20-3422 4237 FAX: 86-20-3422 4233

<b>Approved By</b>		<b>Checked By</b>		<b>Written By</b>	
--------------------	--	-------------------	--	-------------------	--

# Catalogue

---

1. Profile .....	3
2. Main parameter .....	3
3. Wiring drawing .....	4
4. Parts position drawing .....	5
5. Structure drawing .....	6-7

## 1. Profile:

AN-A7.0CHL color TFT-LCD module is made up of AN-A7.0CH driving board and LR070AA013 panel; it accepts PAL and NTSC system and can automatic switch. It adopt IC control electrical source, about the Back light, we use IC control its current in invariable that protect the B/L's abnormality of power supply, and it can automatic close when no signal input.

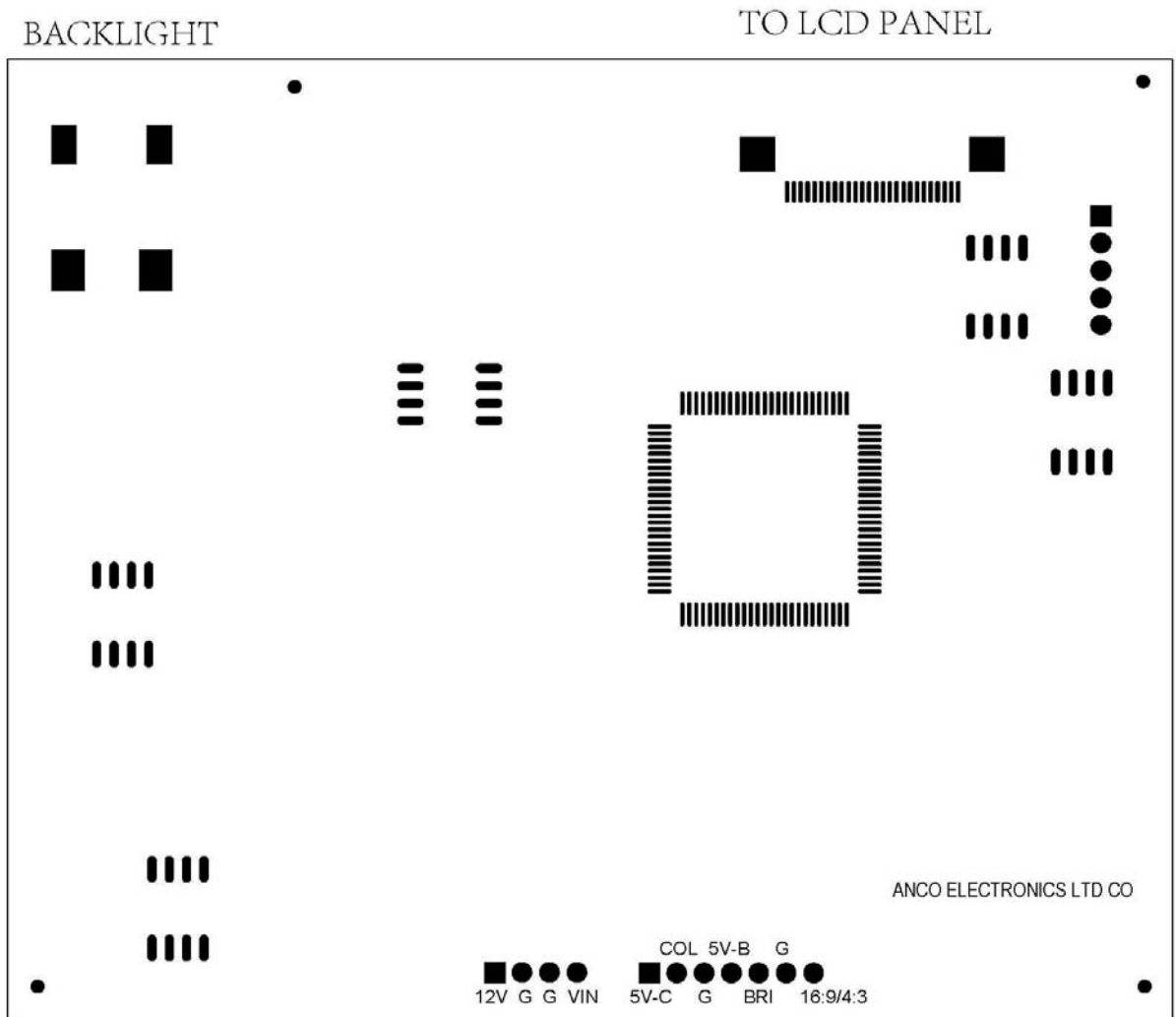
It apply for,

- Normal electrical goods
- Instrument and measuring equipment
- Machine equipment
- Seeing and hearing equipment (Car display、portable DVD、Long-distant terminal、LCD-TV)
- Home application (Video-door bell、Video phone、Digital camera)
- Inapplicable hi-tech goods that need high dependability & stability & accuracy

## 2. Main parameter:

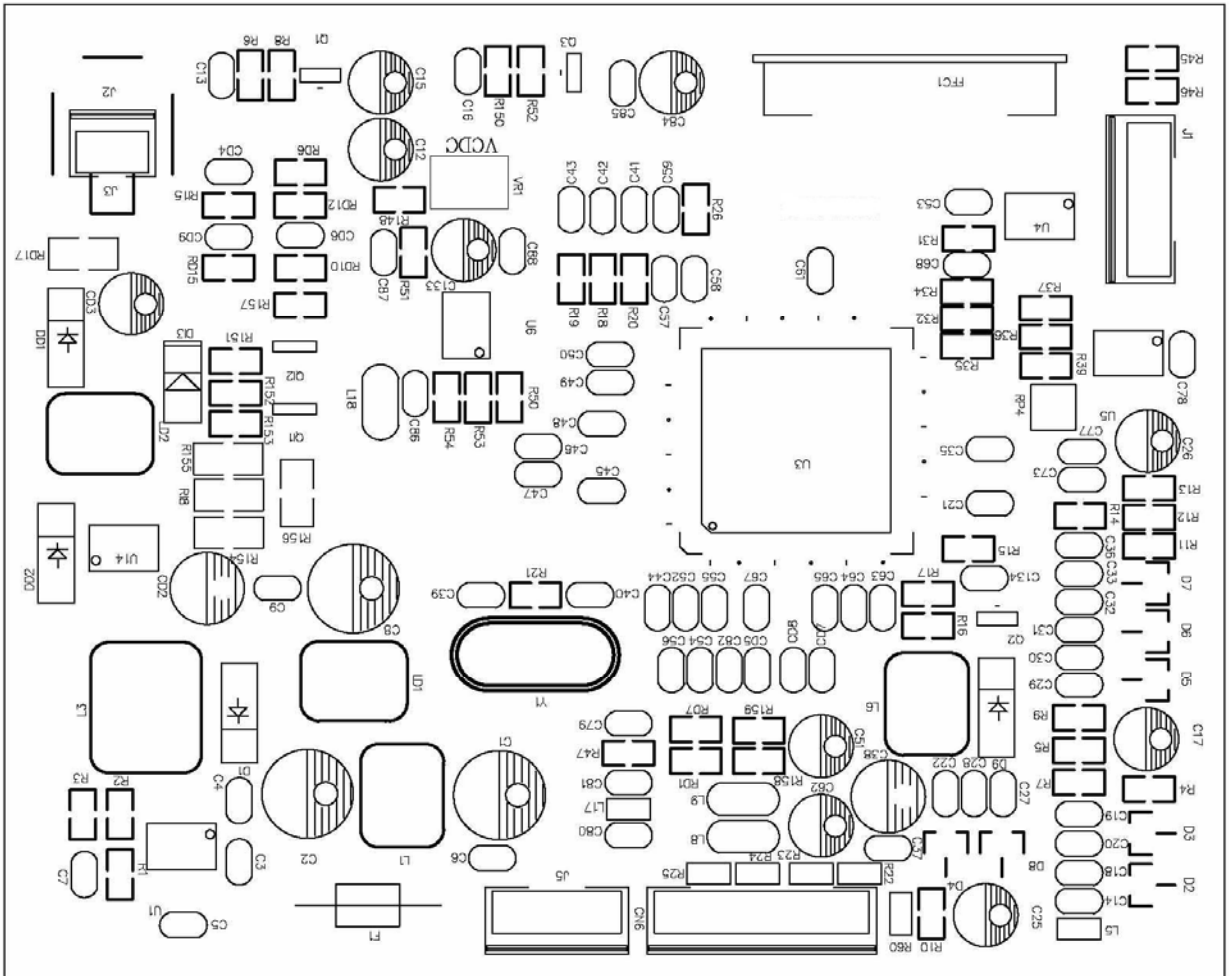
- Product name: 7.0" TFT-LCD module
- Product model: AN-A7.0CHL
- Display: 7.0" TFT-LCD(CHIMEI)
- BACKLIGHT: LED
- Resolution: 480 (H) × 234 (V) (RGB)
- Viewing area (top/bottom/left/right): (15/35/50/50)
- Bright: >250LUX
- System format: PAL/NTSC automatic switch
- Image function: left to right & up to down reversal control
- Video input: 1.0Vp-p 75 ohm (0.5-2.0Vp-p)
- Power supply: DC 12V (10-15V) 280±20mA
- Dimension of display(mm): 154.08 (H) × 86.58 (V)
- The overall dimension of LCD (mm): 164.9 (W) × 100 (H) × 5.7 (D)
- The overall dimension of PCB(mm): 85 (W) × 70 (H) × 10.2 (D)
- Operating Temp: -10~60°C
- Relative humidity: 50~95% RH
- Storage temp: -20°C~+70°C

3. Wiring drawing:



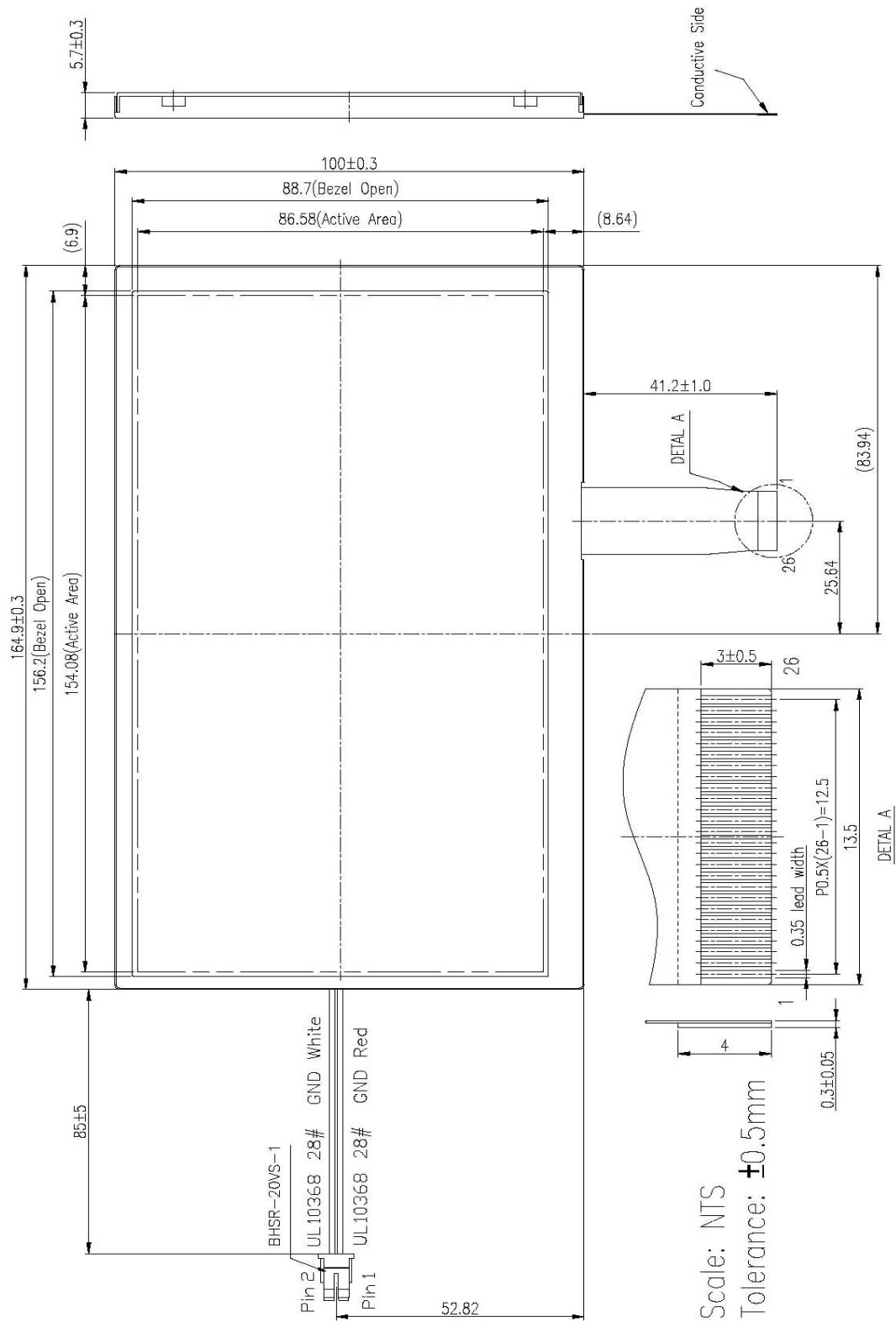
4. Parts position:

Face:



## 5. Structure drawing:

### 5.1 LCD



5.2 PCB:

