

SPECIFICATION

Customer: _____
Product Description: 3.5" TFT LCD MODULE
Customer Model Name.: _____
Customer P/N No.: _____
Model Name.: AN- D 3.5CHL
Date: 2009-04-30

Approved By Customer

ANCO ELECTRONICS CO., LTD

GUANGZHOU DADAO NAN 325 HAO BIHAI DASHA 1107 SHI
GUANGZHOU CHINA.

TEL: 86-20-3422 4237 FAX: 86-20-3422 4233

Approved By		Checked By		Written By	
--------------------	--	-------------------	--	-------------------	--

Catalogue

1. Profile	3
2. Main parameter	3
3. Wiring drawing	4
4. Parts position drawing	5
5. Structure drawing	6-7

1. Profile:

AN-D3.5CHL color TFT-LCD module is made up of AN-D3.5CHL driving board and LQ035NC111 panel; it accepts PAL and NTSC system and can automatic switch. It adopt IC control electrical source, about the Back light, we use IC control its current in invariable that protect the B/L's abnormality of power supply, and it can automatic close when no signal input.

It apply for,

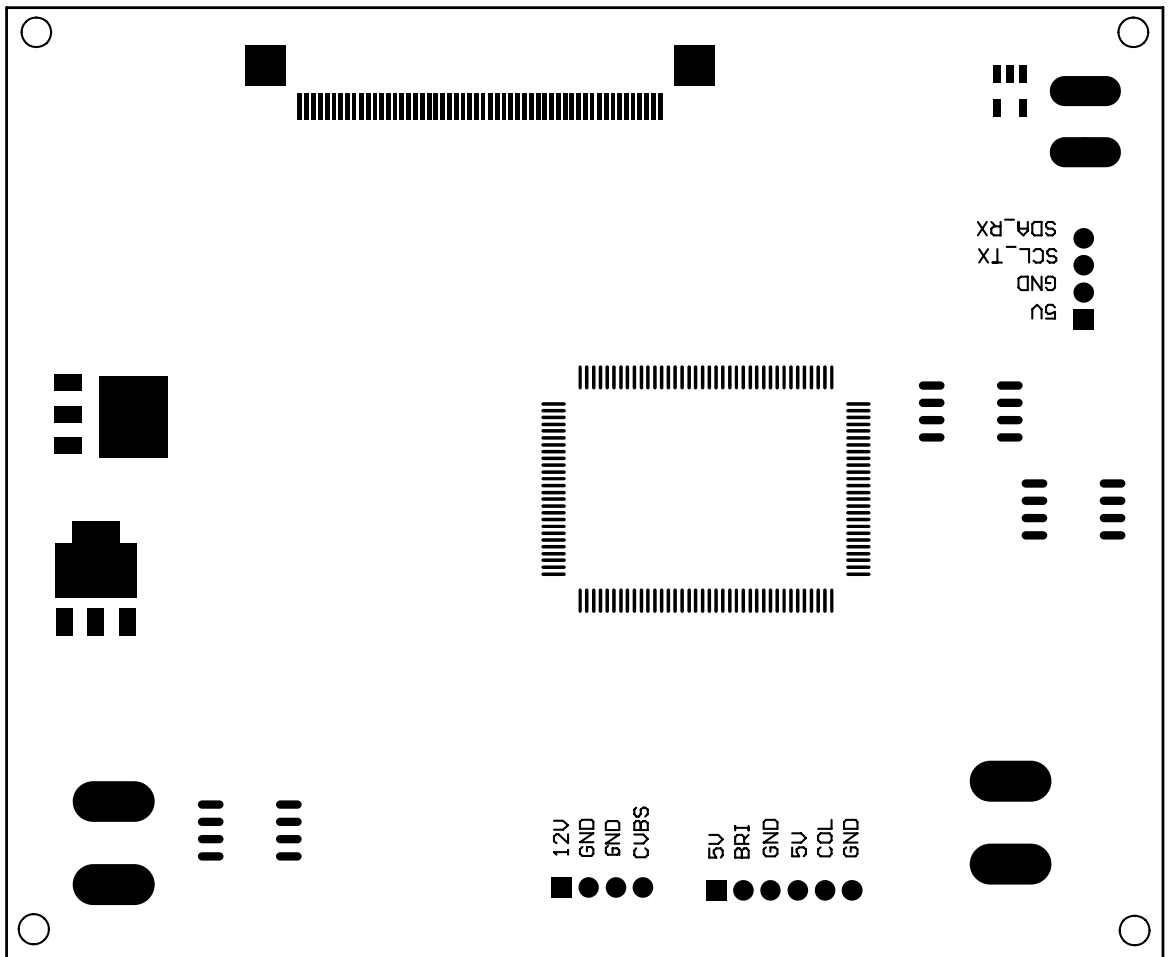
- Normal electrical goods
- Instrument and measuring equipment
- Machine equipment
- Seeing and hearing equipment (Car display、portable DVD、Long-distant terminal、LCD-TV)
- Home application (Video-door bell、 Video phone、 Digital camera)
- Inapplicable hi-tech goods that need high dependability & stability & accuracy

2. Main parameter:

- Product name: 3.5" TFT-LCD module
- Product model: AN-D3.5CHL
- Display: 3.5" TFT-LCD(CHIMEI)
- BACKLIGHT: LED
- Resolution: 320 (H) × 240 (V) (RGB)
- Viewing area (top/bottom/left/right): (15/35/50/50)
- Bright: 250LUX; Contrast: 400
- System format: PAL/NTSC automatic switch
- Image function: left to right & up to down reversal control
- Video input: 1.0Vp-p 75 ohm (0.5-2.0Vp-p)
- Power supply: DC 12V (10-15V) 120±20mA
- Dimension of display(mm): 70.08mm (H) × 52.56mm (V)
- The overall dimension of LCD (mm): 76.9 (W) × 60.9 (H) × 3.3 (D)
- The overall dimension of PCB(mm): 85 (W) × 70 (H) × 10.2 (D)
- Operating Temp: -20~70°C
- Relative humidity: 5~95% RH
- Storage temp: -30°C~+80°C

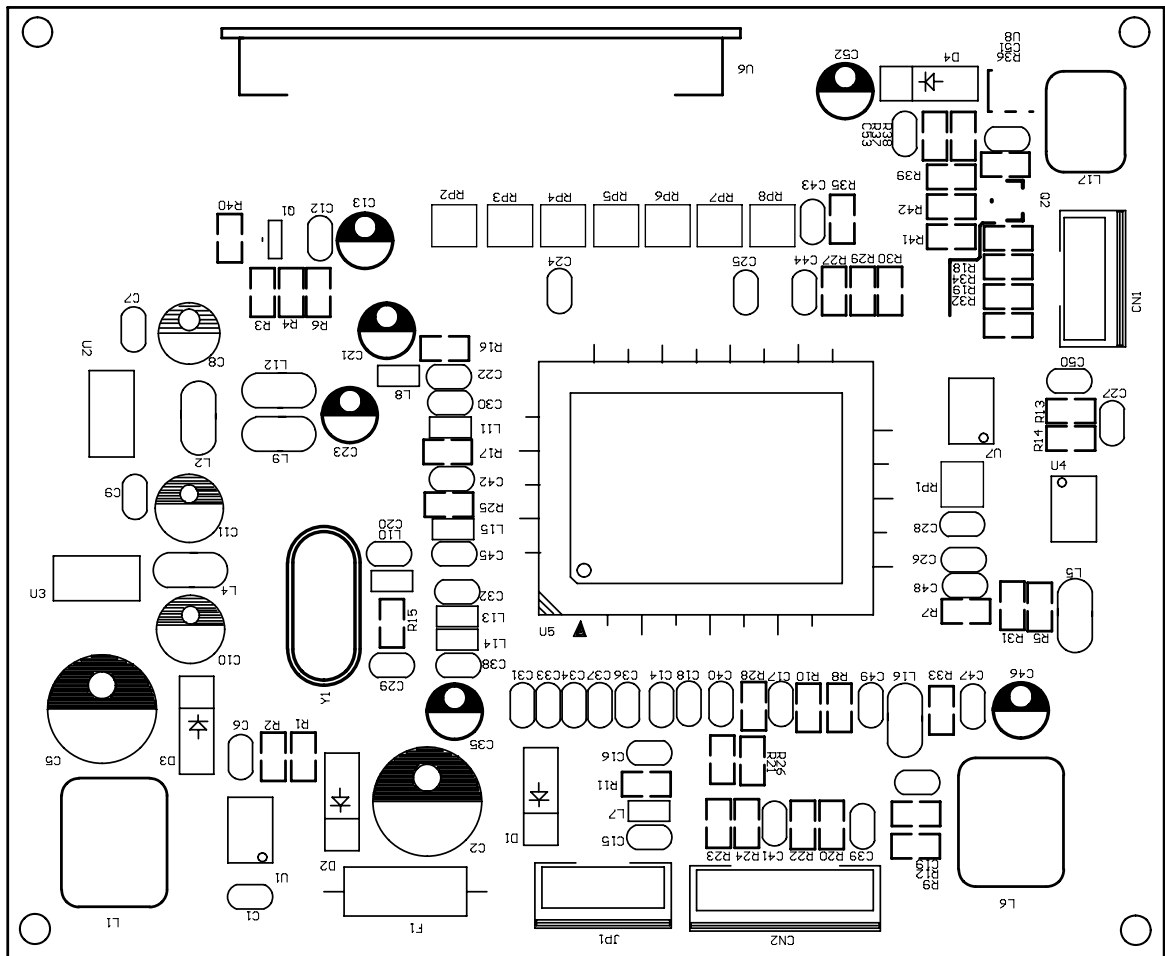
3. Wiring drawing:

TO LCD PANEL



4. Parts position:

Face:



5.2 PCB:

